

# Melbury Primary School

Melbury Road, Bilborough, Nottingham NG8 4AU

Tel: 0115 9155787 Fax: 0115 9155786

Email: [admin@melbury.nottingham.sch.uk](mailto:admin@melbury.nottingham.sch.uk)

[www.melburyprimary.co.uk](http://www.melburyprimary.co.uk)

Headteacher: Mrs J Kemplay

## Newsletter

### A safe school Community

It is important to us that all our families and children feel safe, not only in school but also on the way to and from school. Please can we ask that everyone is considerate and kind to everyone – children and adults. We have a value of tolerance and a golden thread of diversity which runs through our curriculum. We teach this to our children constantly. Please can this be extended to all parents too.

### Year 6 parents applying for secondary school

A reminder that online forms for secondary schools must be filled in by Friday 31<sup>st</sup> October. If you do not fill your form in on time you will not be guaranteed a place at a school of your choice.

### SEND coffee morning – focus will be ASD

On Monday 10<sup>th</sup> November at 9.00am – 9.30am we will be holding a coffee morning in the library. We are delighted that Claire Edis from the Autism team will join us.

Come along to meet other parents/Carers to find out about ASD, receive information, support or just to speak to Claire and Mr Brown (SENDCO) and have a drink and piece of cake!

### Remembrance Day



We will be holding our annual 2 minutes silence on Tuesday 11<sup>th</sup> November. We will take this time to think not only about all those who have died in past wars but also those who are suffering today, on all sides, from current conflicts around the world. Poppies and other merchandise are on sale this week from the school office.

### Odd Socks Day and Anti Bullying Week

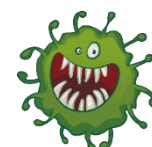
We are asking children and staff to wear odd socks on Monday 10<sup>th</sup> November! This is to celebrate individuality and promote acceptance. It marks the start of Anti-Bullying week. We hope it will be a fun and visual way to spread awareness about the importance of celebrating what makes each of us unique, with the core message that we should treat everyone with respect. All classes will focus on some aspect of anti-bullying during that week.

### Children in need

We will be holding a non-school uniform day for children in Need on Friday 14<sup>th</sup> November. Please bring £1 in exchange for not wearing school uniform. We will not be selling merchandise in school but it is all available from ASDA on Strelley Rd.

### Flu Vaccination

This year flu vaccinations will be on Tuesday 11<sup>th</sup> November for Reception to Year 6. Children will not be able to receive this vaccination at the GP unless they have an identified health problem. If you would like your child to have the flu nasal spray and have not completed the flu e consent letter, please come to the office for a letter.



**'Learning for life'**  
Aiming High to Achieve the Best

# Melbury Primary School

Melbury Road, Bilborough, Nottingham NG8 4AU  
 Tel: 0115 9155787 Fax: 0115 9155786  
 Email: admin@melbury.nottingham.sch.uk  
 www.melburyprimary.co.uk

Headteacher: Mrs J Kemplay

## Scooters and bikes

Scooters and bikes must please go in the bike shed and not in or outside the school office  
 Thank you.

## Parking in front of garages

Please be mindful when parking in front of the garages – we have had a few complaints recently where owners of garages have been blocked in.

## Christmas jumper day

Friday 12<sup>th</sup> December is Christmas Jumper Day. Please bring smellies or chocolate as a prize in return for wearing a Christmas jumper. This will help us to stock the tombola for the Christmas fair.



## KS1 Pantomime

Class 1 and 2 are visiting Nottingham playhouse on Friday 12<sup>th</sup> December to watch Sleeping Beauty. Letters will be sent out shortly, your child will need a packed lunch this day unless you order one from school. The deadline for payment is Monday 8<sup>th</sup> December, this will be available to pay on the Arbor app.



## Christmas Fair

The Christmas Fair will take place Monday 15<sup>th</sup> December from 3.15-4.30 pm. Everyone is welcome. We will have various stalls including the tombola and raffle.

## Dates for your Diary

Monday 10 <sup>th</sup> November	Odd sock day
Tuesday 11 <sup>th</sup> November	Flu Vaccination F2-YR6
Friday 14 <sup>th</sup> November	Children in need
Thursday 20 <sup>th</sup> November	Y4 trip to Lincoln to learn about the Romans
Monday 1 <sup>st</sup> December <b>(all week)</b>	Y6 Into University week at the Hope Centre (graduation on Friday 5 <sup>th</sup> – parents invited)
Wednesday 3 <sup>rd</sup> December	Parents evening
Tuesday 9 <sup>th</sup> December	Parents evening
Thursday 11 <sup>th</sup> December	Foundation Christmas Nativity performance - AM
Thursday 11 <sup>th</sup> December	KS2 Theatre performance
Friday 12 <sup>th</sup> December	Christmas jumper day
Friday 12 <sup>th</sup> December	Class 1 & 2 to pantomime – PM
Monday 15 <sup>th</sup> December	Christmas Fair
Tuesday 16 <sup>th</sup> December	KS1 Christmas performance – AM
Tuesday 16 <sup>th</sup> December	Christmas Dinner
Thursday 18 <sup>th</sup> December	Christmas parties pm
Friday 19 <sup>th</sup> December	Gold Star assembly
Friday 19 <sup>th</sup> December	LAST DAY OF TERM
Monday 5 <sup>th</sup> January	FIRST DAY BACK

We hope everyone has a brilliant half term and look forward to seeing you all again when the school re-opens on Monday 3<sup>rd</sup> November.

**'Learning for life'**  
 Aiming High to Achieve the Best

